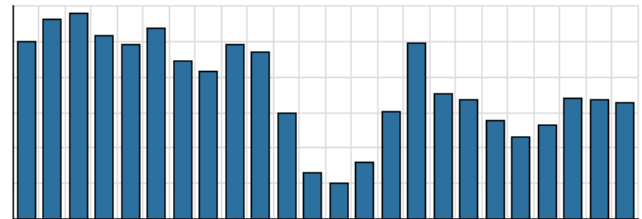


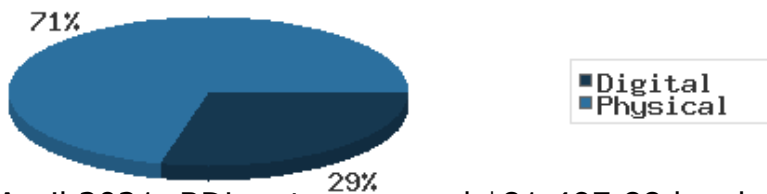
Monthly Stats Brief Narrative

Through April 2021, the number of patrons entering our buildings greatly decreased system-wide compared to this same time year-to-date the previous year. Combined physical and digital use of library materials somewhat decreased year-to-date compared to 2020. About 6% of our registered cardholders checked out a physical item this past month, while about 2% of registered cardholders checked out a digital item.

District Total Checkouts Over 24 Months



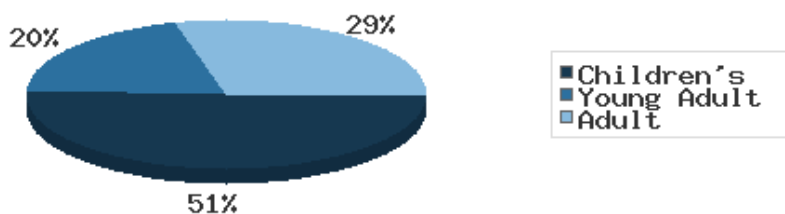
Digital vs. Physical Circulation YTD



Digital usage has comprised about 29% of total materials use year-to-date through April 2021, and digital usage decreased from this time in 2020.

In April 2021, BDL patrons saved \$81,497.88 by checking out 7,379 physical items from the library. Our programming for all ages and our digital services further increase the library's value to the community, bringing the total estimated value to \$98,804.78.

Programs Offered in 2021 YTD



Compared to this time year-to-date 2020, the number of programs BDL offered has greatly decreased. Attendance at programs greatly decreased over this same period.

There were a total of 51 visits to the library for curbside service.

See the full statistical report, starting on the next page, for details and more graphs. The most up-to-date stats are always available online and interactive at <https://www.BranchDistrictLibrary.org/stats>.

Attendance

April 2021

	BDL Monthly Total	BDL YTD	BDL Year End (Year-over-Year Change)				
			2020	2019	2018	2017	2016
Attendance	4,958	15,032 (-55%)	63,336 (-66%)	183,677 (-4%)	191,866 (-1%)	193,922 (-4%)	200,991 (+3%)
Hours Open	904.00	2,938.00 (+19%)	7,132.50 (-37%)	11,250.25 (-9%)	12,312.00 (+13%)	10,869.15 (-0%)	10,877.50 (+25%)
Number of Hours Scheduled Open Each Week (Tracking Since 1/2018)	239.00		237.00 (-2%)	241.00 (-2%)	245.00	0.00	0.00

Patrons

April 2021

	BDL Monthly Total	BDL YTD	BDL Year End (Year-over-Year Change)				
			2020	2019	2018	2017	2016
Population in our Service Area (Tracking Since 2018)	45,205	45,070 (avg) (+0%)	44,931 (avg) (-0%)	45,093 (avg) (-0%)	45,113 (avg)	0 (avg)	0 (avg)
Library Card Holders	22,004	22,024 (avg) (+6%)	21,365 (avg) (+4%)	20,493 (avg) (-4%)	21,350 (avg) (-16%)	25,346 (avg) (+3%)	24,554 (avg) (+4%)
Patrons Who Checked Out a Physical Item	1,269	1,114 (avg) (-20%)	1,102 (avg) (-48%)	2,136 (avg) (-2%)	2,180 (avg) (-5%)	2,305 (avg) (-1%)	2,336 (avg) (-1%)
New Library Card Holders Added	33	123 (-27%)	1,304 (+111%)	618 (-39%)	1,021 (+21%)	844 (-15%)	989 (-9%)
In-House Holds Filled for Our Library Card Holders	947	4,348 (+67%)	9,467 (-10%)	10,527 (-4%)	10,987 (-6%)	11,650 (+12%)	10,407 (+2%)
Active Hoopla Users (Began 2016)	292	309 (avg) (-9%)	322 (avg) (+11%)	290 (avg) (+14%)	255 (avg) (+50%)	170 (avg) (+92%)	89 (avg)
Active OverDrive Users	221	228 (avg) (-6%)	234 (avg) (+10%)	213 (avg) (+18%)	180 (avg) (+27%)	143 (avg) (-1%)	144 (avg) (-1%)

Physical Collection

Tracking Item-Type Breakdown Since 8/2017

April 2021

	BDL Monthly Total	BDL YTD	BDL Year End (Year-over-Year Change)				
			2020	2019	2018	2017	2016
Physical Books and All other Print Materials in the Catalog	90,693		91,278 (-8%)	98,689 (-2%)	100,253 (-0%)	100,293	0
Physical Audiobooks in the Catalog	1,832		1,949 (+9%)	1,783 (-5%)	1,881 (+2%)	1,852	0
Physical Video Materials in the Catalog	25,176		11,352 (-1%)	11,460 (+8%)	10,579 (+1%)	10,519	0
Physical Music Recordings in the Catalog	42		178 (+12%)	159 (-53%)	337 (-2%)	345	0
TOTAL Physical Items in the Catalog	104,243		105,257 (-6%)	112,053 (-1%)	113,050 (+0%)	113,009 (-11%)	126,407 (-4%)

Digital Collection

Tracking Since 8/2017

April 2021

	BDL Monthly Total	BDL YTD	BDL Year End (Year-over-Year Change)				
			2020	2019	2018	2017	2016
Ebooks in All Digital Collections	500,929		480,691 (+30%)	370,666 (+21%)	306,595 (+33%)	230,178	0
Audiobooks in All Digital Collections	141,514		128,892 (+50%)	86,004 (+19%)	71,995 (+36%)	52,833	0
Video Materials in All Digital Collections	19,157		17,791 (+9%)	16,267 (+14%)	14,229 (-10%)	15,767	0
Music Recordings in All Digital Collections	277,352		273,294 (+1%)	271,614 (+13%)	239,705 (-14%)	280,259	0
Periodicals in All Digital Collections	3,300		3,668	0	0	0	0
TOTAL of All Digital Collections	942,252		904,336 (+21%)	744,551 (+18%)	632,524 (+9%)	579,037	0

Total Collection

Tracking Since 8/2017

April 2021

	BDL Monthly Total	BDL YTD	BDL Year End (Year-over-Year Change)				
			2020	2019	2018	2017	2016
Combined Physical Items	104,243		105,257 (-6%)	112,053 (-1%)	113,050 (+0%)	113,009 (-11%)	126,407 (-4%)
Combined Digital Collections	942,252		904,336 (+21%)	744,551 (+18%)	632,524 (+9%)	579,037	0
TOTAL of all Collections	1,046,495		1,009,593 (+18%)	856,604 (+15%)	745,574 (+8%)	692,046 (+447%)	126,407 (-4%)

Use of Physical Items

April 2021

	BDL Monthly Total	BDL YTD	BDL Year End (Year-over-Year Change)				
			2020	2019	2018	2017	2016
Checkouts of Cataloged Items	5,236	18,737 (-14%)	52,227 (-53%)	110,285 (-3%)	113,128 (-6%)	120,916 (+2%)	118,595 (-3%)
Renewals of Cataloged Items	595	2,599 (+0%)	7,181 (-47%)	13,490 (-1%)	13,607 (-8%)	14,804 (-4%)	15,480 (+0%)
Items Used in the Library But Not Checked Out	339	1,131 (+29%)	6,404 (+54%)	4,166 (+49%)	2,803 (-8%)	3,050 (+126%)	1,351 (+7,011%)
Checkouts of Uncataloged Items	114	283 (-50%)	1,001 (-70%)	3,294 (-16%)	3,904 (+38%)	2,839 (-38%)	4,578 (+4%)
Requests from BDL Patrons for Items at Other MeLCat Libraries, Actually Fulfilled	641	2,445 (+29%)	4,599 (-53%)	9,873 (+1%)	9,777 (+20%)	8,169 (+15%)	7,112 (+16%)
Requests from Other MeLCat Libraries for Items at BDL, Actually Fulfilled	454	1,810 (+41%)	3,175 (-58%)	7,582 (-23%)	9,810 (+25%)	7,867 (+11%)	7,068 (+46%)
TOTAL Use of Physical Items	7,379	27,005 (-7%)	74,587 (-50%)	148,690 (-3%)	153,029 (-3%)	157,645 (+2%)	154,184 (+1%)

Use of Digital Resources

April 2021

	BDL Monthly Total	BDL YTD	BDL Year End (Year-over-Year Change)				
			2020	2019	2018	2017	2016
OverDrive Checkouts	1,159	4,342 (-1%)	13,051 (+21%)	10,822 (+14%)	9,501 (+21%)	7,823 (+4%)	7,502 (+2%)
Hoopla Checkouts (Began 2016)	1,034	4,312 (-11%)	13,604 (+9%)	12,530 (-2%)	12,796 (+20%)	10,669 (+96%)	5,432
RB Digital Circulations (Began 2020)	0	295 (+5%)	1,066	0	0	0	0
All Other Digital Services	250	2,156 (-34%)	7,140 (-33%)	10,604 (+11%)	9,572 (-72%)	34,047 (-46%)	62,788 (+38%)
TOTAL Use of Digital Resources	2,443	11,105 (-13%)	34,861 (+3%)	33,956 (+7%)	31,869 (-39%)	52,539 (-31%)	75,722 (+43%)

Total Item Usage

April 2021

	BDL Monthly Total	BDL YTD	BDL Year End (Year-over-Year Change)				
			2020	2019	2018	2017	2016
Combined Checkouts of Physical Items	7,379	27,005 (-7%)	74,587 (-50%)	148,690 (-3%)	153,029 (-3%)	157,645 (+2%)	154,184 (+1%)
Combined Use of Digital Resources	2,443	11,105 (-13%)	34,861 (+3%)	33,956 (+7%)	31,869 (-39%)	52,539 (-31%)	75,722 (+43%)
TOTAL Uses of All BDL Items	9,822	38,110 (-9%)	109,448 (-40%)	182,646 (-1%)	184,898 (-12%)	210,184 (-9%)	229,906 (+12%)

Cataloging

April 2021

	BDL Monthly Total	BDL YTD	BDL Year End (Year-over-Year Change)				
			2020	2019	2018	2017	2016
Physical Items Added to the Catalog	1,318	4,658 (+84%)	9,938 (+2%)	9,719 (-12%)	11,056 (+0%)	11,009 (-1%)	11,091 (+29%)
Physical Items Deleted from the Catalog	1,148	5,699 (+141%)	17,003 (+58%)	10,769 (-2%)	10,941 (-55%)	24,366 (+53%)	15,968 (+84%)

Reference Questions

April 2021

	BDL Monthly Total	BDL YTD	BDL Year End (Year-over-Year Change)				
			2020	2019	2018	2017	2016
General Reference Questions in Person	573	2,051 (+21%)	4,347 (-50%)	8,748 (+32%)	6,641 (-12%)	7,537 (+20%)	6,285 (+124%)
Questions via Telephone Calls	480	2,235 (+135%)	4,559 (+11%)	4,111 (+6%)	3,866 (-24%)	5,079 (+10%)	4,622 (+60%)
Reference Questions Delivered Online	4	138 (+146%)	243 (-14%)	281 (+85%)	152 (-35%)	233 (-23%)	304 (+34%)
In-Person Questions on Computer or Internet Use	218	913 (-37%)	2,767 (-63%)	7,505 (+6%)	7,068 (-3%)	7,285 (+11%)	6,568 (+18%)
In-Person Questions about Our Online Databases	12	50 (+47%)	107 (-69%)	349 (-15%)	409 (+13%)	363 (+114%)	170 (+85%)
In-Person Tax Form Questions	22	224 (-17%)	286 (-12%)	326 (-37%)	518 (+5%)	493 (+4%)	473 (-18%)
TOTAL of All Reference Questions	1,309	5,611 (+26%)	12,309 (-42%)	21,320 (+14%)	18,654 (-11%)	20,990 (+14%)	18,422 (+52%)

Notary Services

Began 9/2017 at Coldwater Only

April 2021

	BDL Monthly Total	BDL YTD	BDL Year End (Year-over-Year Change)				
			2020	2019	2018	2017	2016
Patrons Who Used our Free Notary Services	2	8 (-50%)	46 (-52%)	95 (+44%)	66 (+371%)	14	0
Documents Notarized	2	7 (-68%)	54 (-56%)	124 (+85%)	67 (+253%)	19	0

MeLCat
April 2021

	BDL Monthly Total	BDL YTD	BDL Year End (Year-over-Year Change)				
			2020	2019	2018	2017	2016
Requests from BDL Patrons for Items at Other MeLCat Libraries	694	2,577 (+28%)	5,026 (-52%)	10,538 (+1%)	10,462 (+20%)	8,699 (+14%)	7,643 (+5%)
Requests from BDL Patrons for Items at Other MeLCat Libraries, Actually Fulfilled	641	2,445 (+29%)	4,599 (-53%)	9,873 (+1%)	9,777 (+20%)	8,169 (+15%)	7,112 (+16%)
Requests from Other MeLCat Libraries for Items at BDL	483	2,091 (+21%)	4,067 (-52%)	8,405 (-18%)	10,296 (+29%)	7,994 (+13%)	7,096 (+18%)
Requests from Other MeLCat Libraries for Items at BDL, Actually Fulfilled	454	1,810 (+41%)	3,175 (-58%)	7,582 (-23%)	9,810 (+25%)	7,867 (+11%)	7,068 (+46%)

Programs Held
April 2021

	BDL Monthly Total	BDL YTD	BDL Year End (Year-over-Year Change)				
			2020	2019	2018	2017	2016
Early Childhood Literacy Programs Held (Tracking since 2021)	11	31	0	0	0	0	0
Juvenile Programs Held	22	88 (-61%)	551 (-31%)	804 (+10%)	730 (+1%)	720 (+19%)	604 (+5%)
Young Adult Programs Held	7	34 (-68%)	138 (-55%)	304 (-10%)	338 (+41%)	239 (+47%)	163 (+8%)
Adult Programs Held	11	49 (-27%)	257 (+54%)	167 (+23%)	136 (-7%)	146 (-34%)	220 (+40%)
All-Ages Programs Held (Tracking since 2021)	2	29	0	0	0	0	0
Early Childhood Literacy Summer Reading Programs Held (Tracking since 2021)	0	0	0	0	0	0	0
Juvenile Summer Reading Events Held	0	0	0	173 (+52%)	114 (+20%)	95 (+7%)	89 (+6%)
Young Adult Summer Reading Events Held	0	0	0	61 (+24%)	49 (-14%)	57 (+97%)	29 (-66%)
Adult Summer Reading Events Held	0	0	0	17 (+467%)	3	0	3 (-40%)
All-Ages Summer Reading Programs Held (Tracking since 2021)	0	0	0	0	0	0	0
Computer Classes Held	1	1	1 (-99%)	81 (+305%)	20 (-9%)	22 (+57%)	14 (-36%)
TOTAL of All Programs	54	232 (-42%)	947 (-41%)	1,607 (+16%)	1,390 (+9%)	1,279 (+14%)	1,122 (+4%)

Program Attendance

April 2021

	BDL Monthly Total	BDL YTD	BDL Year End (Year-over-Year Change)				
			2020	2019	2018	2017	2016
Attendees at Early Childhood Literacy Programs (Tracking since 2021)	179	814	0	0	0	0	0
Attendees at Juvenile Programs	494	1,586 (-80%)	25,317 (+73%)	14,654 (-7%)	15,725 (+2%)	15,351 (+48%)	10,371 (+23%)
Attendees at Young Adult Programs	75	286 (-89%)	3,204 (+29%)	2,489 (-23%)	3,218 (-15%)	3,806 (+276%)	1,011 (+14%)
Attendees at Adult Programs	129	1,518 (-71%)	16,263 (+519%)	2,627 (+33%)	1,970 (-0%)	1,979 (-3%)	2,048 (-5%)
Attendees at All-Ages Programs (Tracking since 2021)	16	1,133	0	0	0	0	0
Attendees at Early Childhood Literacy Summer Reading Programs (Tracking since 2021)	0	0	0	0	0	0	0
Attendees at Juvenile Summer Reading Events	0	0	0	4,186 (+8%)	3,864 (+24%)	3,116 (-20%)	3,904 (+56%)
Attendees at Young Adult Summer Reading Events	0	0	0	279 (-16%)	333 (-50%)	671 (+127%)	295 (+14%)
Attendees at Adult Summer Reading Events	0	0	0	310 (+265%)	85	0	21 (-73%)
Attendees at All-Ages Summer Programs (Tracking since 2021)	0	0	0	0	0	0	0
Attendees at Computer Classes	1	1	0	26 (+30%)	20 (-5%)	21 (+75%)	12 (-59%)
TOTAL of All Program Attendance	894	5,338 (-67%)	44,784 (+82%)	24,571 (-3%)	25,215 (+1%)	24,944 (+41%)	17,662 (+23%)

Summer Reading Overview

April 2021

	BDL Monthly Total	BDL YTD	BDL Year End (Year-over-Year Change)				
			2020	2019	2018	2017	2016
Juveniles Signed Up for Summer Reading Program	0	0	91 (-87%)	711 (-5%)	747 (-35%)	1,153 (+19%)	967 (+13%)
Young Adults Signed up for Summer Reading Program	0	0	29 (-78%)	134 (-65%)	378 (-2%)	385 (+241%)	113 (-64%)
Adults Signed Up for Summer Reading Program	0	0	33 (-79%)	159 (-36%)	248 (+112%)	117 (+36%)	86 (+1%)
Juveniles who Completed Summer Reading Program	0	0	91 (-76%)	385 (+48%)	260 (-50%)	518 (+13%)	459 (-10%)
Young Adults who Completed Summer Reading Program	0	0	29 (-63%)	79 (-41%)	135 (-50%)	268 (+332%)	62 (-49%)
Adults who Completed Summer Reading Program	0	0	33 (-72%)	118 (-28%)	165 (+72%)	96 (+60%)	60 (+7%)
Juvenile Summer Reading Events Held	0	0	0	173 (+52%)	114 (+20%)	95 (+7%)	89 (+6%)
Young Adult Summer Reading Events Held	0	0	0	61 (+24%)	49 (-14%)	57 (+97%)	29 (-66%)
Adult Summer Reading Events Held	0	0	0	17 (+467%)	3	0	3 (-40%)
Attendees at Juvenile Summer Reading Events	0	0	0	4,186 (+8%)	3,864 (+24%)	3,116 (-20%)	3,904 (+56%)
Attendees at Young Adult Summer Reading Events	0	0	0	279 (-16%)	333 (-50%)	671 (+127%)	295 (+14%)
Attendees at Adult Summer Reading Events	0	0	0	310 (+265%)	85	0	21 (-73%)

Summer Reading Program Signups

April 2021

	BDL Monthly Total	BDL YTD	BDL Year End (Year-over-Year Change)				
			2020	2019	2018	2017	2016
Juveniles Signed Up for Summer Reading Program	0	0	91 (-87%)	711 (-5%)	747 (-35%)	1,153 (+19%)	967 (+13%)
Young Adults Signed up for Summer Reading Program	0	0	29 (-78%)	134 (-65%)	378 (-2%)	385 (+241%)	113 (-64%)
Adults Signed Up for Summer Reading Program	0	0	33 (-79%)	159 (-36%)	248 (+112%)	117 (+36%)	86 (+1%)
TOTAL Summer Reading Program Signups	0	0	153 (-85%)	1,004 (-27%)	1,373 (-17%)	1,655 (+42%)	1,166 (-7%)

Summer Reading Program Completions

April 2021

	BDL Monthly Total	BDL YTD	BDL Year End (Year-over-Year Change)				
			2020	2019	2018	2017	2016
Juveniles who Completed Summer Reading Program	0	0	91 (-76%)	385 (+48%)	260 (-50%)	518 (+13%)	459 (-10%)
Young Adults who Completed Summer Reading Program	0	0	29 (-63%)	79 (-41%)	135 (-50%)	268 (+332%)	62 (-49%)
Adults who Completed Summer Reading Program	0	0	33 (-72%)	118 (-28%)	165 (+72%)	96 (+60%)	60 (+7%)
TOTAL Summer Reading Program Completions	0	0	153 (-74%)	582 (+4%)	560 (-37%)	882 (+52%)	581 (-16%)

Library-Provided Computer Services

April 2021

	BDL Monthly Total	BDL YTD	BDL Year End (Year-over-Year Change)				
			2020	2019	2018	2017	2016
One-hour sessions on Library Wifi	20,935	95,826 (-18%)	284,892 (-40%)	474,750 (+2%)	465,219 (+9%)	425,714 (+4%)	410,437 (+17%)
Desktop, Laptop, and Tablet Computers Available for Public Use	88		88	88 (-1%)	89 (+22%)	73	73
Sessions on Library-Provided Computers	585	1,926 (-70%)	9,604 (-73%)	35,720 (-22%)	45,687 (+3%)	44,181 (+6%)	41,513 (-11%)
Hours Library-Provided Computers Used (Tracking Since 2018)	318.85	1,009.54 (-77%)	6,031.58 (-75%)	24,280.36 (-2%)	24,701.55	0.00	0.00
Desktop, Laptop, and Tablet Computers Available for Staff Use	52		52	52 (+4%)	50 (+22%)	41	41

Website Stats

April 2021

	BDL Monthly Total	BDL YTD	BDL Year End (Year-over-Year Change)				
			2020	2019	2018	2017	2016
Monthly Website Sessions	3,895	14,096 (-3%)	41,586 (-28%)	58,161 (+28%)	45,594 (-38%)	73,326 (-2%)	75,139 (+3%)
Monthly Website Page Views	7,441	29,777 (-4%)	92,094 (-29%)	129,778 (+9%)	118,634 (-33%)	177,799 (-2%)	182,084 (+7%)

Faxes, Prints, and Sales

April 2021

	BDL Monthly Total	BDL YTD	BDL Year End (Year-over-Year Change)				
			2020	2019	2018	2017	2016
Fax Pages Received	20	52 (-53%)	149 (-57%)	350 (-16%)	419 (+61%)	260 (+19%)	219 (+27%)
Fax Pages Sent	597	1,936 (+34%)	3,935 (-59%)	9,524 (+3%)	9,249 (+138%)	3,879 (+123%)	1,741 (-7%)
Free Prints for Job Seekers	114 ¹	265 (-61%)	1,091 (-61%)	2,796 (-23%)	3,631 (+16%)	3,128 (+9%)	2,878 (+23%)
Black and White Patron Prints (Tracking Since 6/2016)	5,180	17,204 (+10%)	33,177 (-56%)	75,818 (-6%)	81,016 (+7%)	75,606 (+113%)	35,561
Color Patron Prints (Tracking Since 6/2016)	685	2,195 (-1%)	4,709 (-58%)	11,299 (-8%)	12,285 (+20%)	10,253 (+154%)	4,036
Flash Drives Sold (Tracking Since 6/2016)	0	2 (-75%)	18 (-51%)	37 (-10%)	41 (-27%)	56 (+4%)	54
Earbuds Sold (Tracking Since 6/2016)	6	18 (-78%)	131 (-72%)	462 (-14%)	538 (+29%)	416 (+151%)	166

Notes

1. Includes 50 free student prints. There were 7 at Bronson, 19 at Coldwater, 4 at Quincy, 2 at Sherwood, and 18 at Union Twp.

Fines and Fees

Overdue Fines Dropped in 2017

April 2021

	BDL Monthly Total	BDL YTD	BDL Year End (Year-over-Year Change)				
			2020	2019	2018	2017	2016
Fines and Fees Payments Received	\$ 62.92	\$ 582.82 (+27%)	\$ 1,717.01 (-44%)	\$ 3,092.62 (+28%)	\$ 2,412.73 (-68%)	\$ 7,628.31 (-24%)	\$ 10,062.96 (-30%)
Outstanding Fines and Fees	\$ 340.88		53,362.56 (-4%)	55,588.42 (-0%)	55,850.27 (-34%)	84,232.33 (-63%)	228,102.90 (+3%)

Debt Collections

Unique Management Services, Inc.
Tracking Since 2014

April 2021

	BDL Monthly Total	BDL YTD	BDL Year End (Year-over-Year Change)				
			2020	2019	2018	2017	2016
Fine Payments as a Result of Collection Agency's Efforts	\$ 0.00	\$ 0.00	\$ 0.00	\$ 268.00 (-94%)	\$ 4,183.45 (+1,727%)	\$ 229.00 (-76%)	\$ 947.13 (+16%)
Library Materials Returned as a Result of Collection Agency's Efforts	\$ 0.00	\$ 0.00	\$ 0.00	\$ 0.00	\$ 462.00 (-48%)	\$ 888.95 (-33%)	\$ 1,317.93 (-2%)
What We Paid Collection Agency for Their Services	\$ 0.00	\$ 0.00	\$ 0.00	\$ 134.10 (-75%)	\$ 528.66 (-5%)	\$ 558.08 (-45%)	\$ 1,022.23 (-3%)

Value to Our Service Area
 Visit <https://www.BranchDistrictLibrary.org/value>
 to learn how we determine these numbers.

April 2021

	BDL Monthly Total	BDL YTD	BDL Year End (Year-over-Year Change)				
			2020	2019	2018	2017	2016
Value from Physical Item Checkouts	\$ 81,497.88	\$ 290,976.61 (-14%)	\$ 822,979.52 (-53%)	\$ 1,755,554.08 (-7%)	\$ 1,888,907.75 (-12%)	\$ 2,135,671.28 (+0%)	\$ 2,132,387.79 (-2%)
Value from Attending Programs (Tracking Since 1/2018)	\$ 4,470.00	\$ 26,690.00 (+57%)	\$ 126,690.00 (+7%)	\$ 118,485.00 (-6%)	\$ 125,795.00	\$ 0.00	\$ 0.00
Value from Fax Service (Tracking Since 1/2018)	\$ 617.00	\$ 1,988.00 (+30%)	\$ 4,056.00 (-60%)	\$ 10,205.00 (+6%)	\$ 9,668.00	\$ 0.00	\$ 0.00
Value from Employment Prints (Tracking Since 1/2018)	\$ 15.90	\$ 38.55 (-62%)	\$ 162.75 (-61%)	\$ 419.40 (-23%)	\$ 544.65	\$ 0.00	\$ 0.00
Value from Notary Services (Tracking Since 1/2018)	\$ 10.00	\$ 40.00 (-47%)	\$ 225.00 (-53%)	\$ 475.00 (+44%)	\$ 330.00	\$ 0.00	\$ 0.00
Value from Digital Services (Tracking Since 1/2018)	\$ 9,772.00	\$ 44,420.00 (-11%)	\$ 138,316.00 (+2%)	\$ 135,824.00 (+7%)	\$ 127,476.00	\$ 0.00	\$ 0.00
Value from Using Library Computers (Tracking Since 1/2018)	\$ 956.55	\$ 3,028.62 (-77%)	\$ 18,094.74 (-75%)	\$ 72,841.08 (-2%)	\$ 74,104.66	\$ 0.00	\$ 0.00
Value from Using Library Wifi (Tracking Since 1/2018)	\$ 1,465.45	\$ 6,707.82 (-18%)	\$ 19,942.44 (-40%)	\$ 33,232.50 (+2%)	\$ 32,565.33	\$ 0.00	\$ 0.00
TOTAL Value of Free Library Services	\$ 98,804.78	\$ 373,889.60 (-13%)	\$ 1,130,466.45 (-47%)	\$ 2,127,036.06 (-6%)	\$ 2,259,391.39 (+6%)	\$ 2,135,671.28 (+0%)	\$ 2,132,387.79 (-2%)

Materials Expenditures

Tracking since 2018

April 2021

	BDL Monthly Total	BDL YTD	BDL Year End (Year-over-Year Change)				
			2020	2019	2018	2017	2016
Amount Spent on Books	\$ 6,771.97	\$ 29,414.77 (+33%)	\$ 85,727.68 (+12%)	\$ 76,878.30 (-18%)	\$ 93,763.50	\$ 0.00	\$ 0.00
Amount Spent on Periodicals	\$ 40.00	\$ 565.21 (+2,590%)	\$ 5,390.61 (-5%)	\$ 5,663.99 (-20%)	\$ 7,085.59	\$ 0.00	\$ 0.00
Amount Spent on Audiovisual Materials	\$ 1,607.19	\$ 5,281.44 (+42%)	\$ 16,992.04 (+13%)	\$ 15,009.96 (-17%)	\$ 17,998.47	\$ 0.00	\$ 0.00
Amount Spent on Digital Resources	\$ 3,310.47	\$ 14,622.90 (+60%)	\$ 31,708.66 (+12%)	\$ 28,412.62 (-35%)	\$ 43,798.90	\$ 0.00	\$ 0.00
TOTAL Spent on All Library Materials	\$ 11,729.63	\$ 49,884.32 (+42%)	\$ 139,818.99 (+11%)	\$ 125,964.87 (-23%)	\$ 162,646.46	\$ 0.00	\$ 0.00

Other Expenditures

Tracking since 2018

April 2021

	BDL Monthly Total	BDL YTD	BDL Year End (Year-over-Year Change)				
			2020	2019	2018	2017	2016
Total Materials Expenditures	\$ 11,729.63	\$ 49,884.32 (+42%)	\$ 139,818.99 (+11%)	\$ 125,964.87 (-23%)	\$ 162,646.46	\$ 0.00	\$ 0.00
Total Staff Expenditures	\$ 113,894.41	\$ 358,697.22 (+19%)	\$ 956,326.38 (-18%)	\$ 1,172,756.92 (-20%)	\$ 1,469,560.33	\$ 0.00	\$ 0.00
Expenditures in other categories	\$ 121,935.11	\$ 231,542.14 (+89%)	\$ 483,894.79 (+37%)	\$ 353,231.25 (-16%)	\$ 422,747.74	\$ 0.00	\$ 0.00
TOTAL Expenditures in all Categories	\$ 235,829.52	\$ 630,926.16 (+15%)	\$ 1,819,492.24 (+1%)	\$ 1,797,240.67 (-13%)	\$ 2,054,954.53	\$ 0.00	\$ 0.00

Staffing

April 2021

	BDL Monthly Total	BDL YTD	BDL Year End (Year-over-Year Change)				
			2020	2019	2018	2017	2016
Total BDL Staff	35	36 (avg) (-3%)	36 (avg) (-3%)	37 (avg) (-8%)	40 (avg) (+5%)	37 (avg) (+9%)	34 (avg) (+17%)
BDL Staff with MLS Degree	5	5 (avg)	5 (avg) (+25%)	5 (avg) (-33%)	6 (avg) (+20%)	5 (avg) (+150%)	3 (avg)
Worked Full-Time Equivalents	22.66	24.11 (avg) (-8%)	24.53 (avg) (-4%)	25.78 (avg) (-4%)	26.92 (avg) (+8%)	24.91 (avg) (+41%)	17.90 (avg) (+13%)
Hours of Specialized Training for Staff (Tracking Since 1/2019)	91	304 (+46%)	1,170 (+119%)	534	0	0	0
Hours Volunteers Worked at the Library (Tracking Since 1/2019)	68	68 (+74%)	39 (-96%)	1,065	0	0	0

Outreach Services

Began 2018

April 2021

	BDL Monthly Total	BDL YTD	BDL Year End (Year-over-Year Change)				
			2020	2019	2018	2017	2016
Number of Patrons Served by Outreach Services	24	65	42 (-40%)	70 (-8%)	76 (+2,433%)	3	0
Number of Items Delivered to Outreach Patrons	76	271 (+13,450%)	242 (+10%)	220 (-64%)	606 (+2,231%)	26	0

Coldwater Branch Heritage Room

Stats part of Coldwater Branch totals above; shown here for convenience.

April 2021

	Heritage Room	BDL YTD	BDL Year End (Year-over-Year Change)				
			2020	2019	2018	2017	2016
Heritage Room Attendance	0	34 (-66%)	105 (-78%)	484 (-34%)	736 (+12%)	658 (-7%)	705 (+51%)
In-Person Reference Questions	1	7 (-91%)	80 (-81%)	412 (-42%)	708 (+29%)	550 (+664%)	72 (+140%)
Reference Telephone Calls	0	36 (-12%)	60 (-74%)	232 (-16%)	277 (-36%)	433 (+15%)	376 (+83%)
Online Reference Questions	0	14 (+56%)	34 (-48%)	65 (+8%)	60 (-5%)	63 (-24%)	83 (+8%)

Coldwater Branch Kids' Place

Stats part of Coldwater Branch totals above; shown here for convenience.
Tracking separately since April 2019.

April 2021

	Kids' Place	BDL YTD	BDL Year End (Year-over-Year Change)				
			2020	2019	2018	2017	2016
Kids' Place Attendance	158	599 (-68%)	2,385 (-75%)	9,710	0	0	0
In-Person Reference Questions	40	176 (+45%)	226 (-61%)	575	0	0	0
Reference Telephone Calls	8	76 (+145%)	156 (-30%)	224	0	0	0
Online Reference Questions	0	0	0	0	0	0	0

Coldwater Branch Teen Space

Stats part of Coldwater Branch totals above; shown here for convenience.
Tracking separately since April 2019.

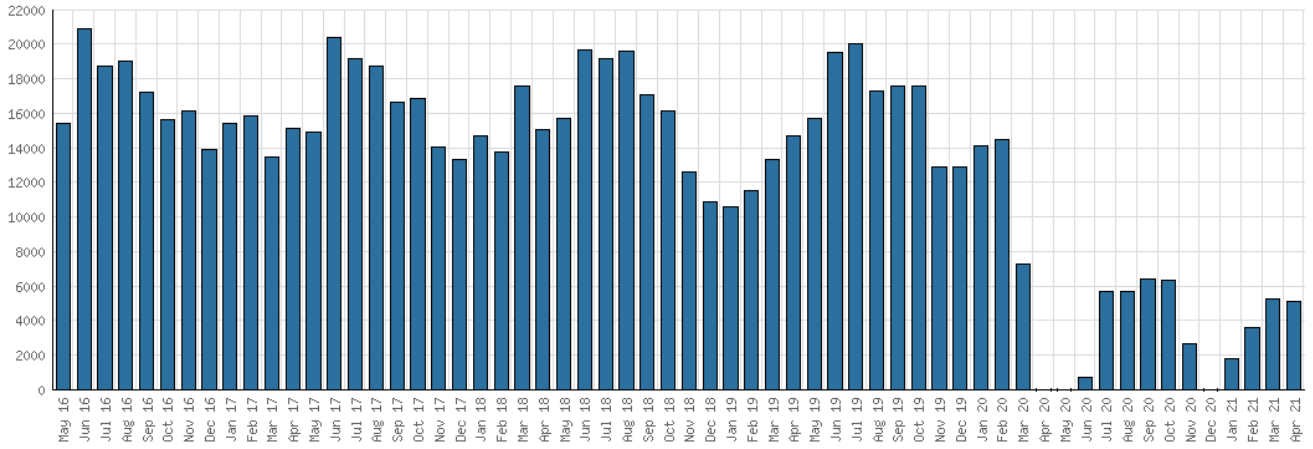
April 2021

	Teen Space	BDL YTD	BDL Year End (Year-over-Year Change)				
			2020	2019	2018	2017	2016
Teen Space Attendance	14	187 (-76%)	845 (-80%)	4,172	0	0	0
In-Person Reference Questions	0	0	4 (-96%)	93	0	0	0
Reference Telephone Calls	0	0	0	0	0	0	0
Online Reference Questions	0	0	0	0	0	0	0

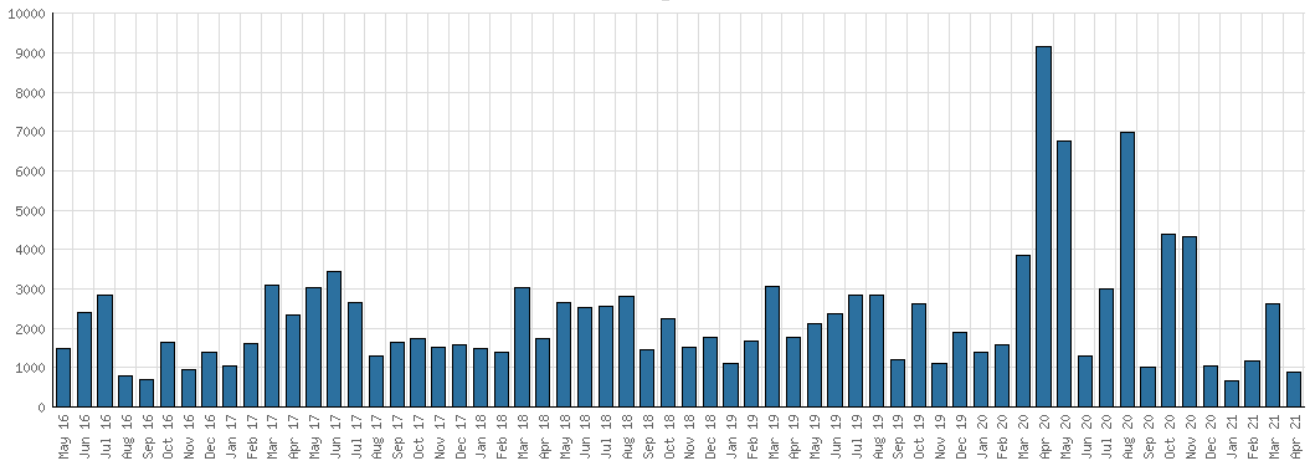
Selected Graphs

5-year Monthly Trends

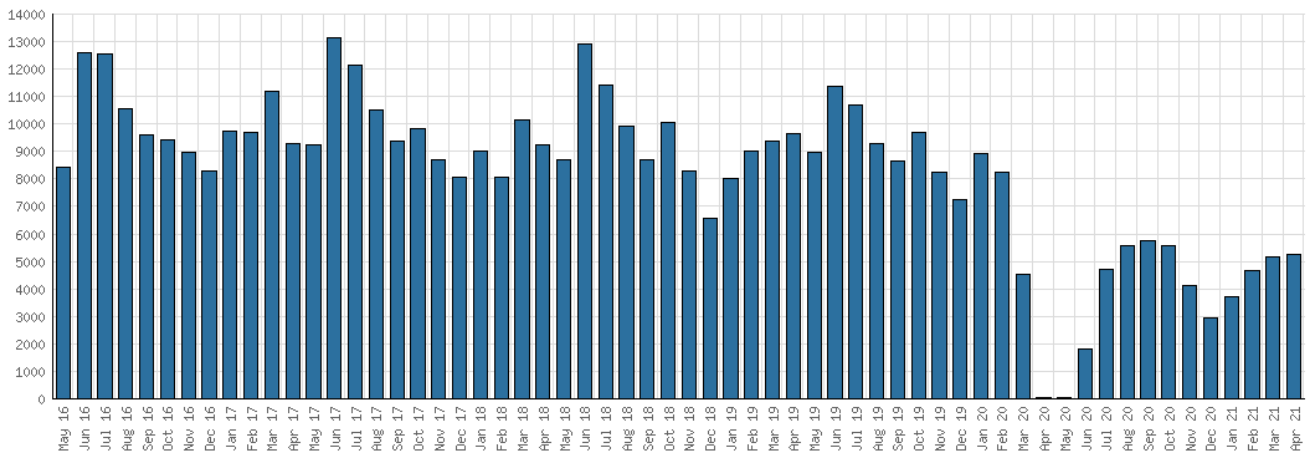
District Attendance



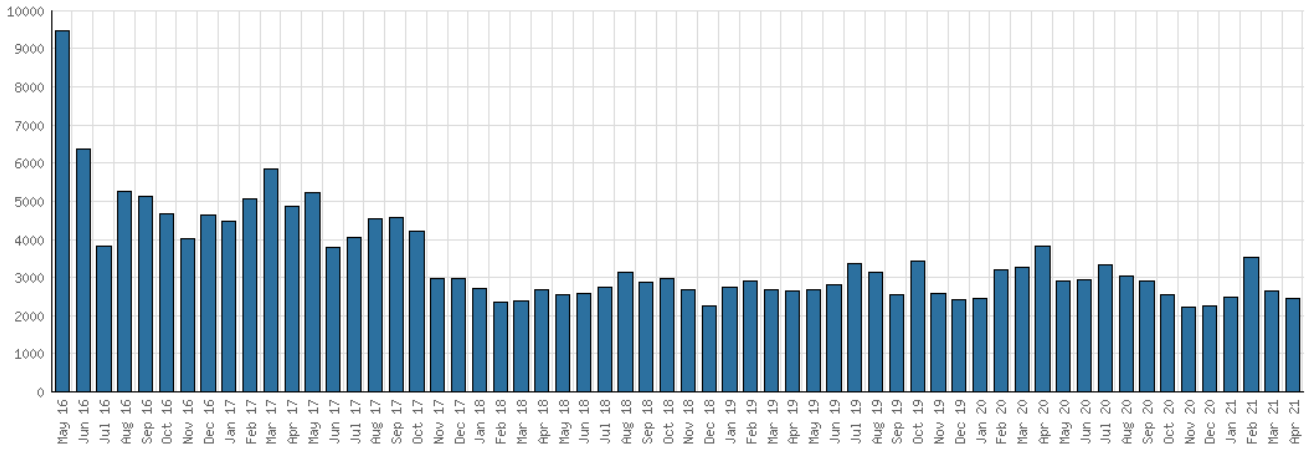
District Program Attendance



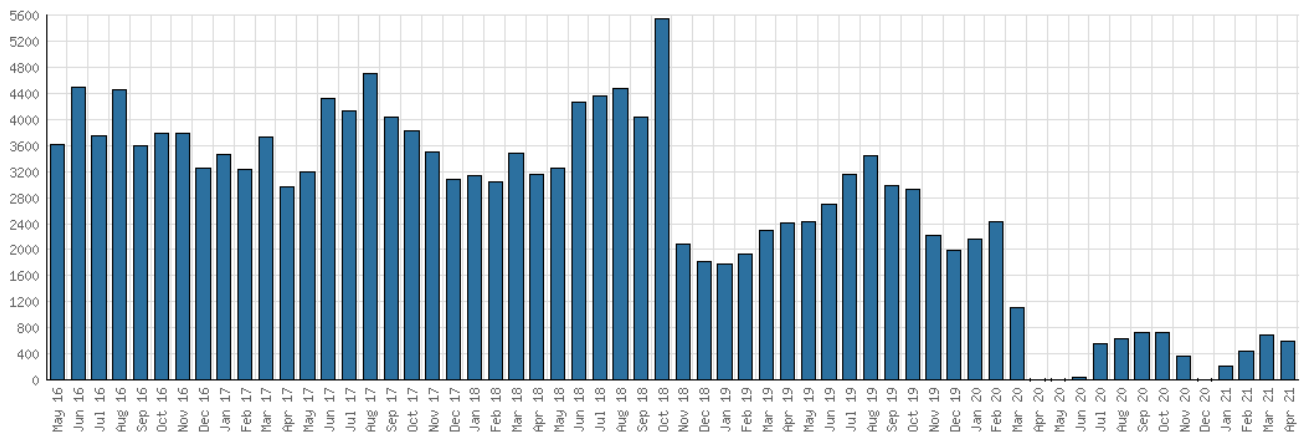
District Physical Checkouts



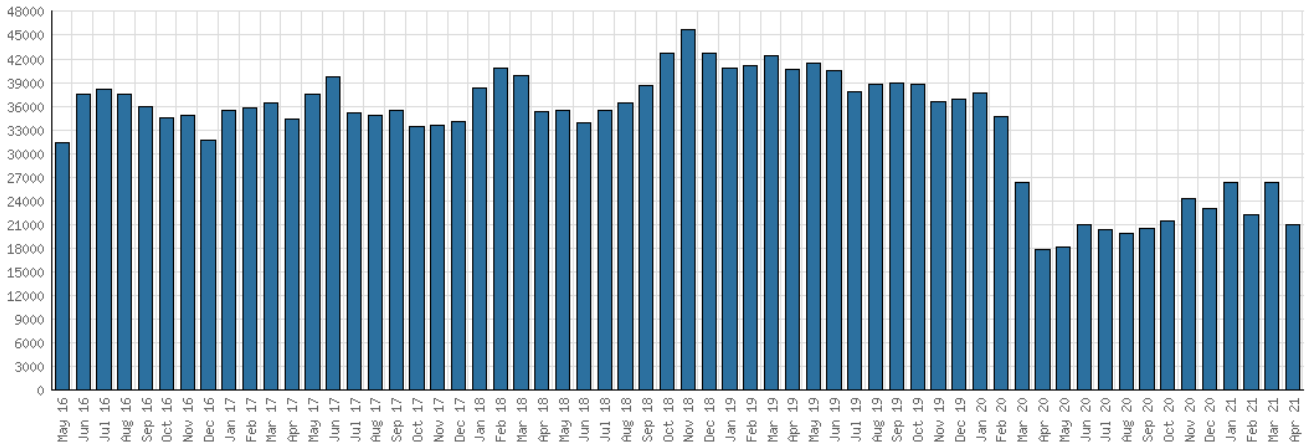
District Digital Usage



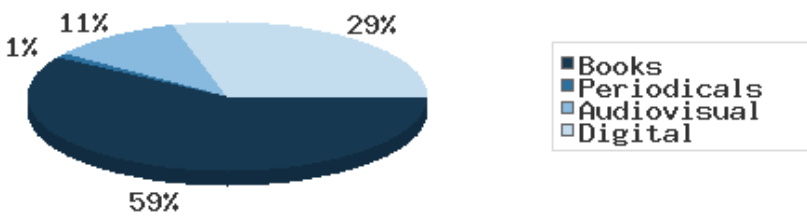
District Use of Library-Provided Computers



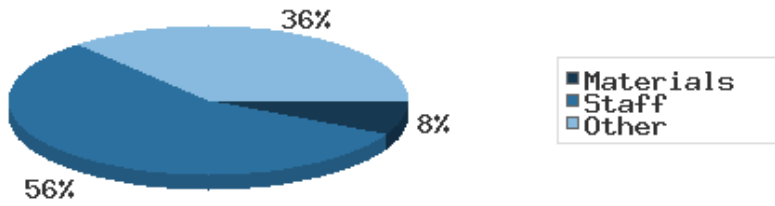
District One-Hour Sessions on Library Wifi



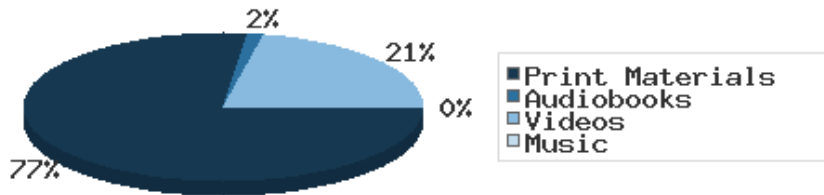
Year-to-Date Materials Expenditures



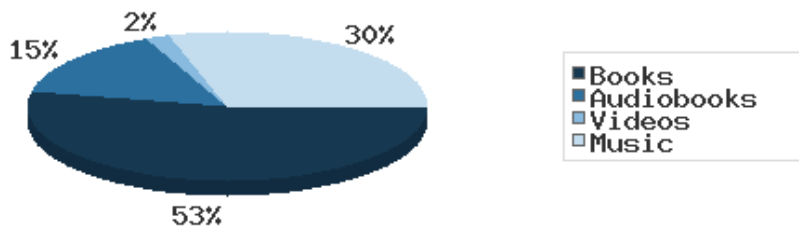
YTD Expenditures in all Categories



Physical Collection



Digital Collection



YTD Usage Breakdown of Digital Services

